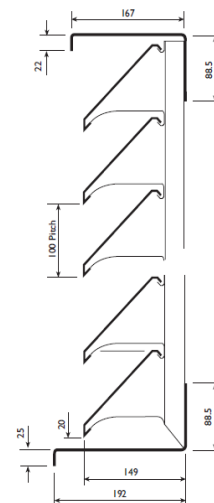
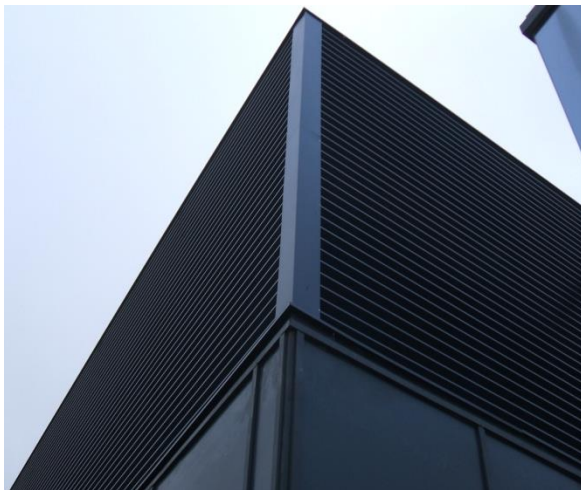


N.B.S. FORMAT SPECIFICATION - 1UL/DH

Company Details	ALPS Limited Unit 3, 12 Downley Road Havant Hampshire PO9 2NJ Tel: 02392 480055 Email: sales@alpslouvres.co.uk
Product Reference	Universal Louvre Deep Horizontal Type 1UL/DH
Material	All principal components manufactured from aluminium alloy type 3005 (Colterra).
Blade pitch and angle	100mm pitch @ 45 degrees
Number of louvre banks	1 (Single bank)
Special Features	Louvre blades shall be roll formed to an aerodynamically efficient profile and clipped to concealed structural supporting mullions. The system shall achieve a minimum aerodynamic performance coefficient (CV) of 0.435 (inlet) with bird guard fitted to the rear. HEVAC Weathering Classification Class D
Decorative Finish	Mill finish (unpainted), polyester powder coating, natural or colour anodised.
Coverage	Partial (external components painted) or Total (all principle components painted)
Accessories	Bird Guards / Insect Mesh / Blanking Panel / Insulated Blanking Panel / Mitred Corners / Louvred Doors.
Alternative Materials	Galvanised Mild Steel or Stainless Steel



© Architectural Louvre Products & Services Limited 2016